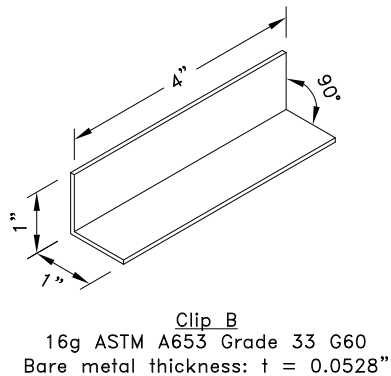
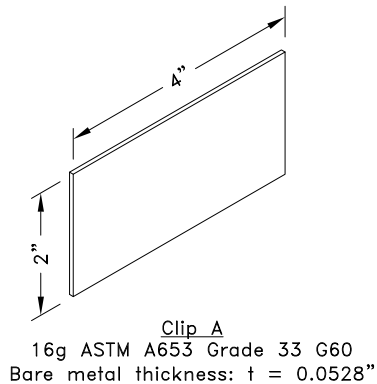
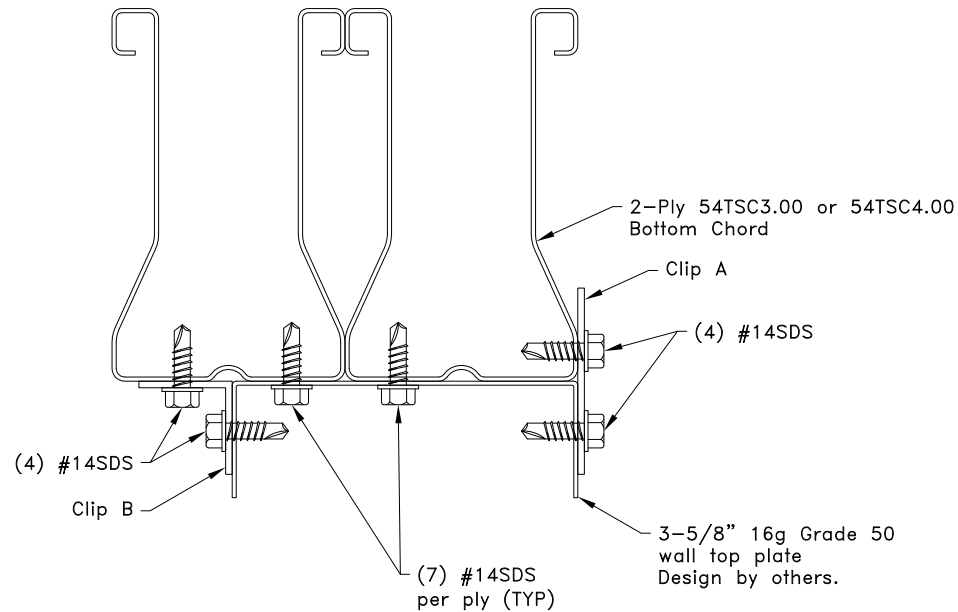


# Allowable Loads In Combination

U = 3650#

P<sub>1</sub> = 4580#



## General Notes:

1. SDS = Self-Drilling Tapping screw
2. Screw end distance and edge distance is 3/8" minimum. Screw spacing is 3/4" minimum.
3. U refers to Uplift, P<sub>1</sub> refers to lateral load.
4. The wall top plate is to be designed by the job engineer. The wall top plate must be designed to support the loads applied to it (downward, upward and lateral).
5. Cold-Formed Steel Calculations are per the 2010 supplement to the AISI 2007 "North American Specifications for the Design of Cold-Formed Steel Structural Members" (S100-07/S2-10).



www.TrusSteel.com

Florida: 2400 Lake Orange Drive, Suite 150 / Orlando, FL 32837 / (800) 755-6001  
Missouri: 13723 Riverport Drive, Suite 200 / Maryland Heights, MO 63043 / (800) 326-4102

## Truss Attachment To Cold-Formed Steel

Alpine, a division of ITW Building Components Group, Inc. shall not be responsible for any performance failure in a connection due to a deviation from this detail. Any variation from this detail shall be approved in advance by Alpine, a division of ITW Building Components Group, Inc.

## Custom Detail:

CD150706

Date:

02/26/15

## Custom Detail Category:

Truss-to-Bearing Connection